

**(DANRE) sh3bp4a Antibody (N-term)**  
**Purified Rabbit Polyclonal Antibody (Pab)**  
**Catalog # AP21084a**

**Specification**

---

**(DANRE) sh3bp4a Antibody (N-term) - Product Information**

Application	WB,E
Primary Accession	<a href="#">Q1LVQ2</a>
Reactivity	Zebrafish
Host	Rabbit
Clonality	Polyclonal
Isotype	Rabbit IgG
Calculated MW	108453
Antigen Region	132-165

**(DANRE) sh3bp4a Antibody (N-term) - Additional Information**

**Gene ID** 403082

**Other Names**

SH3 domain-binding protein 4-A, sh3bp4a, sh3bp4

**Target/Specificity**

This DANRE sh3bp4a antibody is generated from a rabbit immunized with a KLH conjugated synthetic peptide between 132-165 amino acids from the N-terminal region of DANRE sh3bp4a.

**Dilution**

WB~~1:1000

E~~Use at an assay dependent concentration.

**Format**

Purified polyclonal antibody supplied in PBS with 0.09% (W/V) sodium azide. This antibody is purified through a protein A column, followed by peptide affinity purification.

**Storage**

Maintain refrigerated at 2-8°C for up to 2 weeks. For long term storage store at -20°C in small aliquots to prevent freeze-thaw cycles.

**Precautions**

(DANRE) sh3bp4a Antibody (N-term) is for research use only and not for use in diagnostic or therapeutic procedures.

**(DANRE) sh3bp4a Antibody (N-term) - Protein Information**

**Name** sh3bp4a

**Synonyms** sh3bp4

**Function** Possible role in regulating endocytosis of the transferrin receptor at the plasma membrane. Alternatively, may function as a negative regulator of the amino acid-induced TOR signaling by inhibiting the formation of active Rag GTPase complexes. Preferentially binds inactive Rag GTPase complexes and prevents their interaction with the mTORC1 complex inhibiting its relocalization to lysosomes and its activation. Thereby, may indirectly regulate cell growth, proliferation and autophagy (By similarity).

#### **Cellular Location**

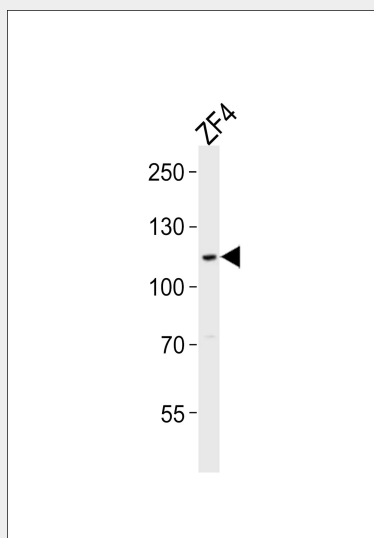
Membrane, clathrin-coated pit. Cytoplasmic vesicle, clathrin-coated vesicle. Nucleus.  
Note=Specifically associated with transferrin receptor- containing clathrin-coated pits and clathrin-coated vesicles. May also localize to the nucleus (By similarity).

#### **(DANRE) sh3bp4a Antibody (N-term) - Protocols**

Provided below are standard protocols that you may find useful for product applications.

- [Western Blot](#)
- [Blocking Peptides](#)
- [Dot Blot](#)
- [Immunohistochemistry](#)
- [Immunofluorescence](#)
- [Immunoprecipitation](#)
- [Flow Cytometry](#)
- [Cell Culture](#)

#### **(DANRE) sh3bp4a Antibody (N-term) - Images**



Western blot analysis of lysate from ZF4 cell line, using DANRE sh3bp4a Antibody (N-term)(Cat. #AP21084a). AP21084a was diluted at 1:1000. A goat anti-rabbit IgG H&L(HRP) at 1:10000 dilution was used as the secondary antibody. Lysate at 20ug.

#### **(DANRE) sh3bp4a Antibody (N-term) - Background**

Possible role in regulating endocytosis of the transferrin receptor at the plasma membrane. Alternatively, may function as a negative regulator of the amino acid-induced TOR signaling by inhibiting the formation of active Rag GTPase complexes. Preferentially binds inactive Rag GTPase complexes and prevents their interaction with the mTORC1 complex inhibiting its relocalization to

lysosomes and its activation. Thereby, may indirectly regulate cell growth, proliferation and autophagy (By similarity).

**(DANRE) sh3bp4a Antibody (N-term) - References**

Howe K.,et al.Nature 496:498-503(2013).

Abe S.,et al.Submitted (NOV-2002) to the EMBL/GenBank/DDBJ databases.